

NAKHEEL'S DESIGN VISION

“ WE ARE BUILDING A NEW REALITY
FOR OUR PEOPLE, A NEW FUTURE
FOR OUR CHILDREN, AND A NEW
MODEL OF DEVELOPMENT.”

H.H Sheikh Mohammed bin Rashid Al Maktoum
UAE VICE-PRESIDENT, PRIME MINISTER, AND RULER OF DUBAI

Cities, as dreams, are built by desires.

Nakheel is a world-leading master developer, delivering award-winning projects united by the same endless pursuit of perfection. Nakheel creates new worlds to build a new happiness: not a passing and evanescent happiness, but something to leave behind, something that will inspire those who come after us. The pursuit of perfection and happiness is a real journey, culminating in the realisation of Palm Jebel Ali: a pinnacle of engineering, design excellence and Dubai living. This project is unlike any other; it symbolises a journey not just of a company, but of a nation.

A journey that will involve men, women, and families: all will desire to experience the wonder of colour, the music of emotion, the excellence of shape, and the

harmony of nature – the unprecedented and exclusive world of Palm Jebel Ali.

In bringing together leading designers with a variety of influences and experiences, two magnificent collections of distinctive villas have been created. With inspiration ranging from vernacular architecture to the sunlit coastal setting to ultra-luxurious materials, this combination of creative minds has ensured that each villa that lines the fronds of Palm Jebel Ali will have a truly unique style and character. Each home will offer an unrivalled living experience to its residents.

This is your home. This is Palm Jebel Ali.

Index

1. A CURATED COLLECTION

THE
BEACH VILLAS

Serenity By The Sea

In a beach villa, a happy tomorrow arrives every day, every single dawn.

Beachfront living at its finest	—	P. 6
An iconic neighbourhood	—	P. 15
Introducing the Beach Collection	—	P. 20

2. LIVE IN THE MASTERPIECE

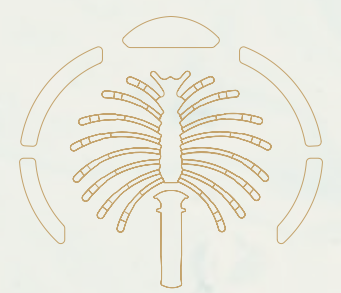
OWN A PIECE
OF HISTORY

The Beach Collection	—	P. 28
Villa Indigo Ocean	—	P. 34

A CURATED COLLECTION

THE
BEACH
VILLAS

1



Serenity By The Sea

Beachfront living at its finest
An iconic neighbourhood
Introducing the Beach Collection

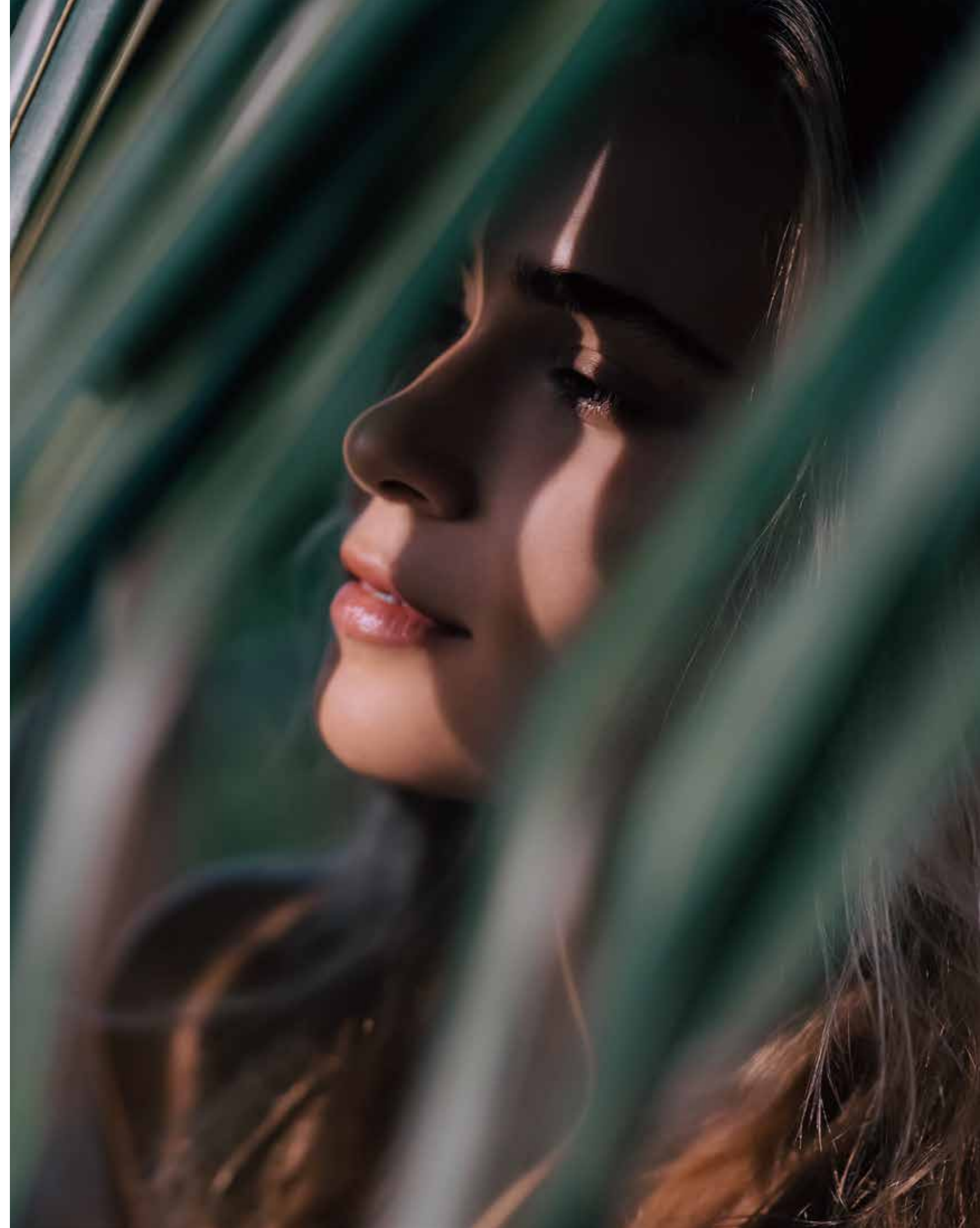
— P.6
— P.15
— P.20

— BEACHFRONT LIVING AT ITS FINEST

SUN, SEA, SAND, & SOPHISTICATION

EDEN HAS A NEW ADDRESS.

Welcome to Palm Jebel Ali, a world-class lifestyle destination meticulously designed and impeccably curated, providing unrivalled luxury living to its residents.

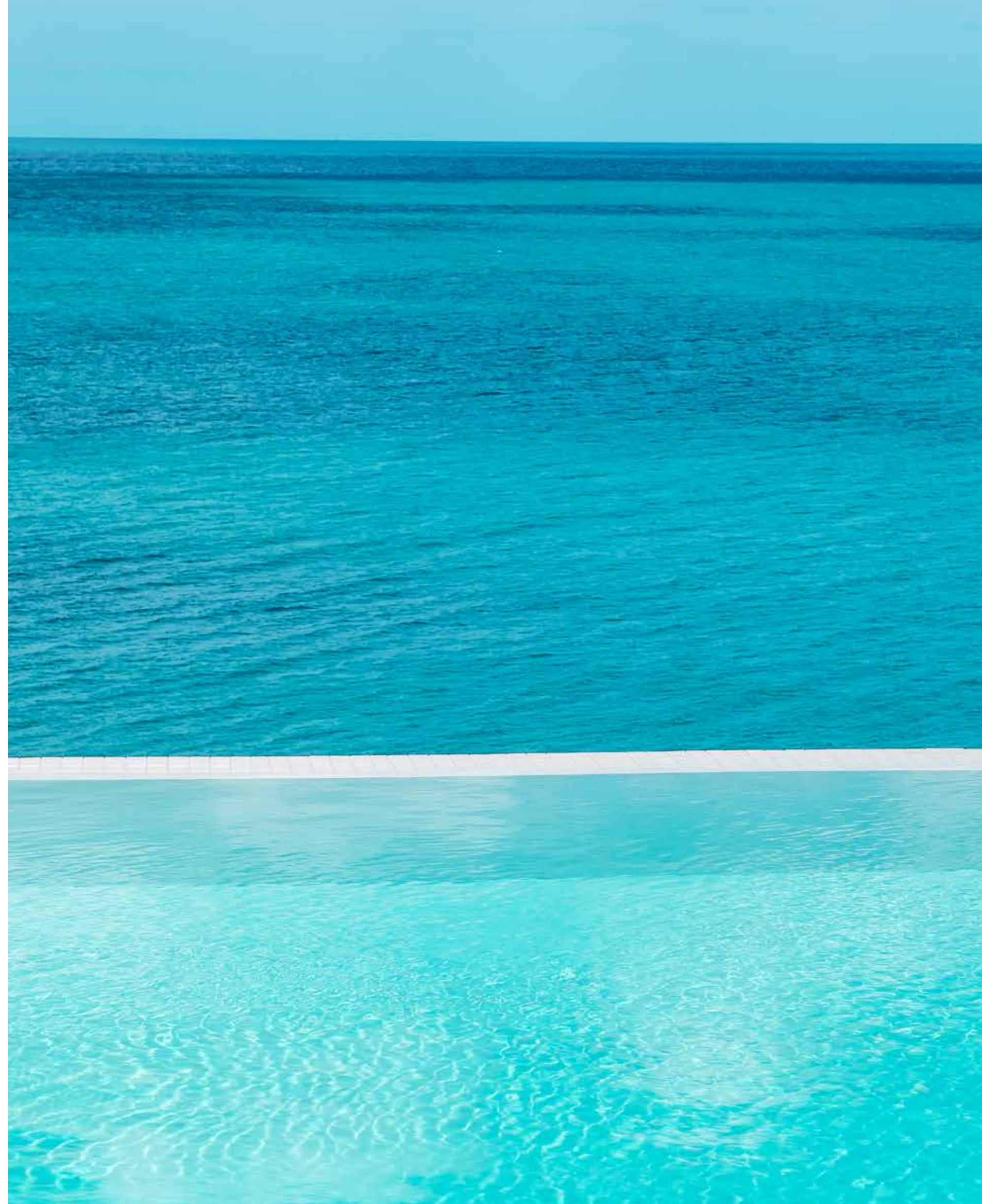


Live a life of **serenity and comfort** in Dubai's most coveted district, a true kaleidoscope born out of colourful greenery, azure waters, and pristine white sands.

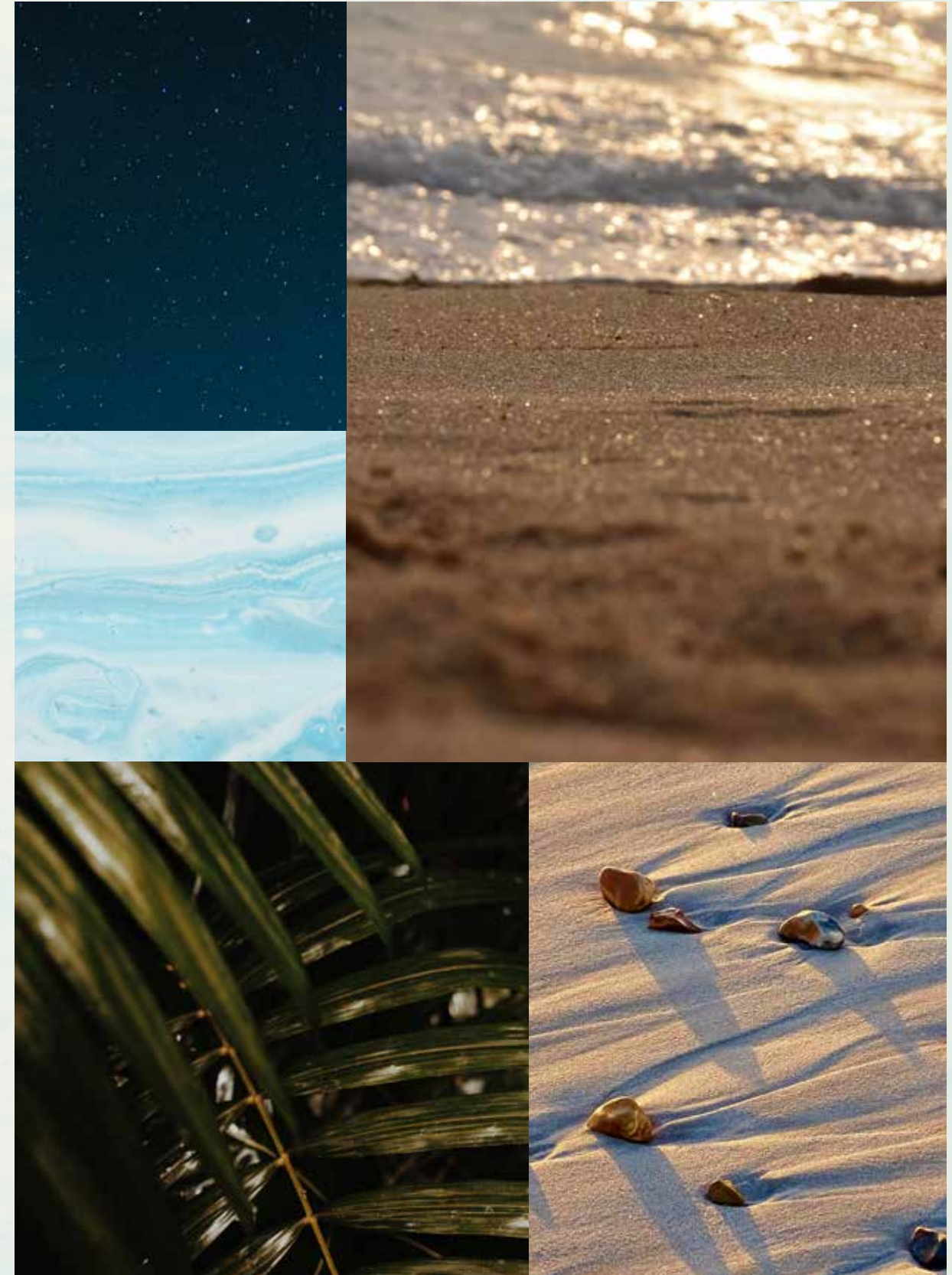
LIVE IN HARMONY WITH NATURE, BETWEEN THE CITY AND THE SKY.

Palm Jebel Ali rises from the sea to form a perfect paradisiacal archipelago. This masterpiece of luxury living offers a unique perspective on Dubai's skyline from a haven of tranquillity to boasting the longest coastline of any destination in Dubai. Palm Jebel Ali is located minutes away from the energy of the city, with excellent connectivity via Sheikh Zayed Road (E11) to other Dubai destinations or to Abu Dhabi. Palm Jebel Ali will be the feature destination of Dubai's rapidly developing southern urban centre. Spectacular properties and five-star amenities are skilfully woven together to create a highly desirable residential destination.





THE
FRONDS
BEACH COLLECTION





— FLOURISHING GREEN FRONDS

AN ICONIC NEIGHBOURHOOD

ARTFULLY DESIGNED, PRIVATE
NEIGHBOURHOODS FOR SOPHISTICATED
CITY LIVING.

Each exclusive frond forms its own thoughtfully planned private neighbourhood. Discover elegant streets painted in varying shades of green. Lush, layered flora merges with carefully curated foliage to create a perfectly harmonious residential landscape directly on the beachfront.

The frond community focuses on offering an active lifestyle, with wide walkable streets allowing pedestrians and bikers to access the beach through pocketed parks. The frond streetscape offers an intensely lush and fragrant landscape providing adequate shade coverage, with designated tree corridors alternating with street lighting and an additional layer of planting buffer to complete this idyllic verdant oasis.



Savour the refined, tropical atmosphere that surrounds you as you step out from your serene garden onto the sandy beach that lies at your doorstep. Enjoy the calming sounds of the waves and the openness of the sea for moments of pure relaxation.

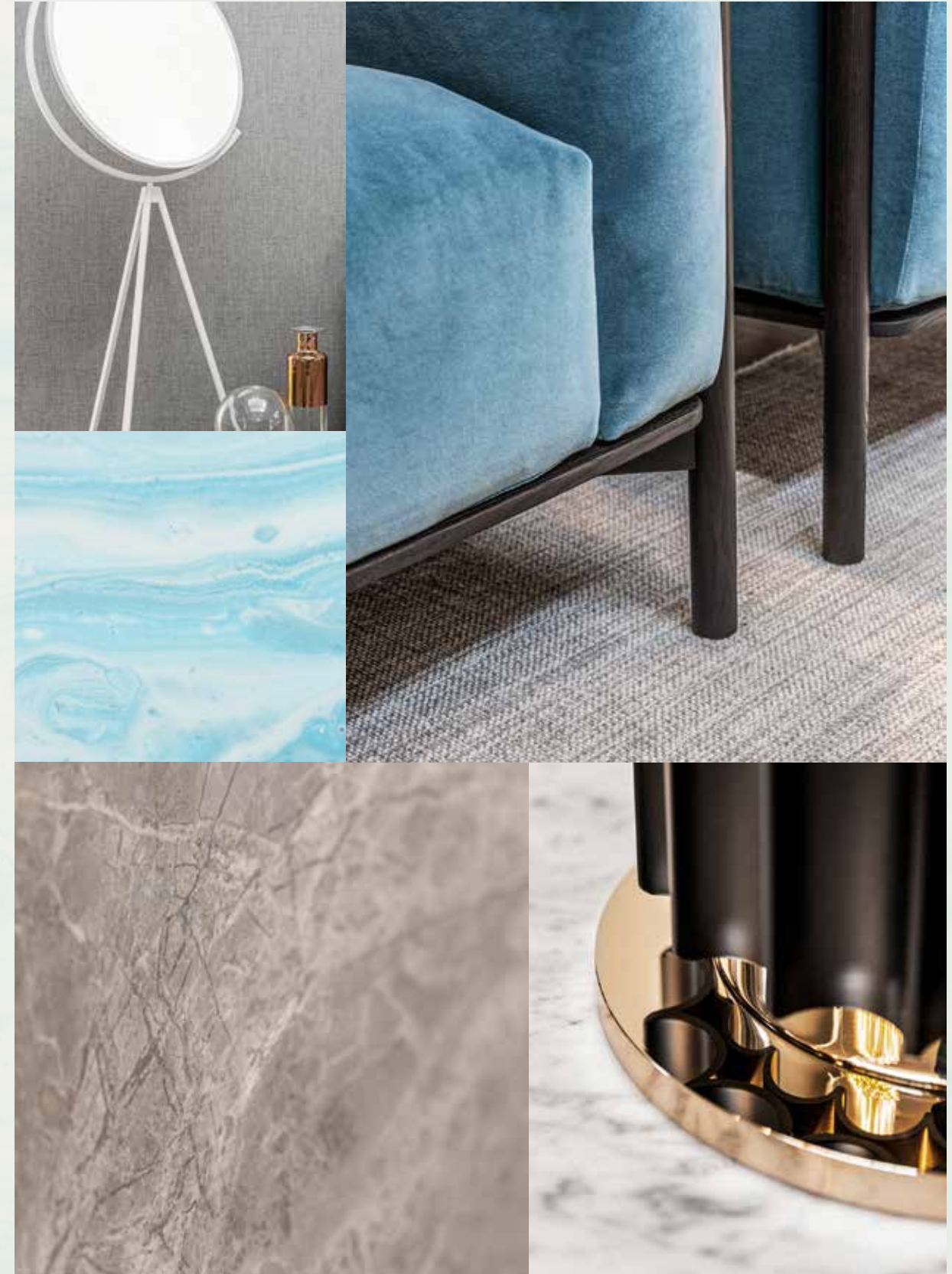


INTRODUCING THE BEACH COLLECTION

CRAFTED WITH CARE

SOPHISTICATED STYLE AND PERFECT POISE.
DISCOVER THE BLISSFUL [BEACH COLLECTION](#).

An inspired collection nestled in an idyllic setting.
Relax as you listen to the sounds of calming water
from the comfort of your enchanting beachfront
terrace.



Exceptional design, a breathtaking beachfront location, and the tranquillity of an exclusive, private neighbourhood.

HOMES DESIGNED WITH **STYLISH FLAIR.**

The Beach Collection is for those who seek a home with a distinctly creative, contemporary design. Discover the wide range of unique architectural designs developed to accommodate a variety of lifestyles with thoughtful spacious layouts that ensure seamless indoor-outdoor living, designed to maximise views of the sea and integrate a feeling of outdoor and indoor harmony. Contemporary architecture achieves a timeless appeal. Villa finishes are unique to each villa, complementing its design and enhancing its key features.



EXCEPTIONAL DESIGN / LUXURIOUS BEACHSIDE ENVIRONMENT / BEACHFRONT LOCATION

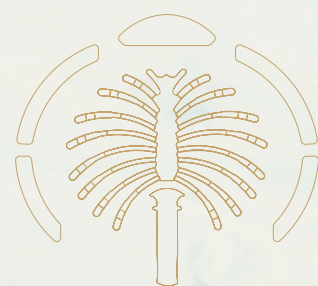


LIVE IN A MASTERPIECE

OWN A PIECE OF

HISTORY

2



Eight Unique Beach Villas

The Beach Collection

P.28

Villa Indigo Ocean

P.34

THE BEACH COLLECTION

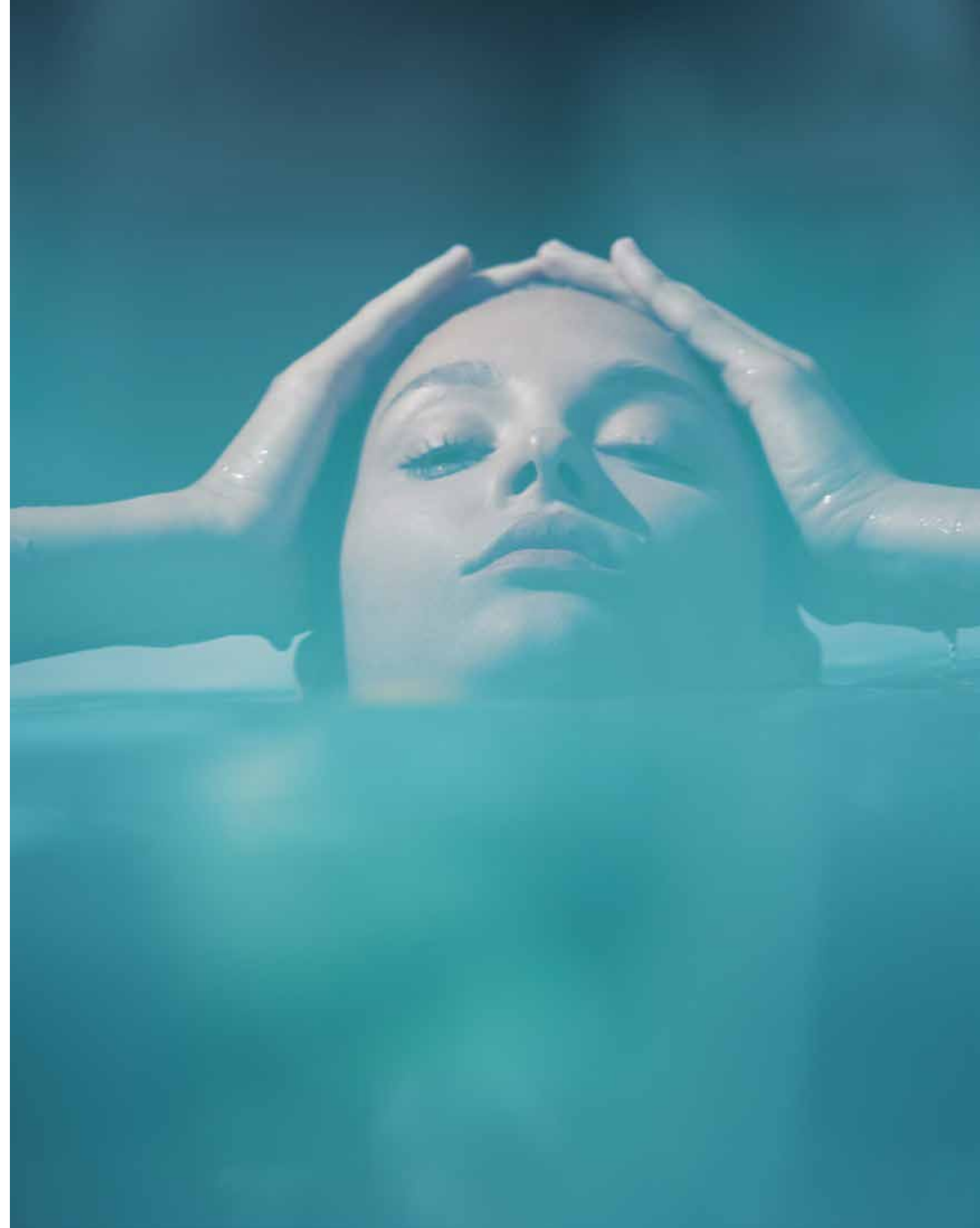
WELCOMING WATERFRONT RESIDENCES

THE CONTEMPORARY **COMPOSITION** OF EACH STATEMENT VILLA HAS BEEN METICULOUSLY DESIGNED.

Imagine living an exclusive waterfront experience. Every day, every morning and every evening, watching and listening to the sea with its waves, its sinuous movements, its sparkling surface: the perfect blend, creating a harmonious landscape.

A gorgeous living space, up to six generous bedrooms with private ensuite bathrooms, lush greenery and colourful plants, the careful design of every detail, and – overall – the feeling of a continuous and open relationship between the indoors and outdoors.

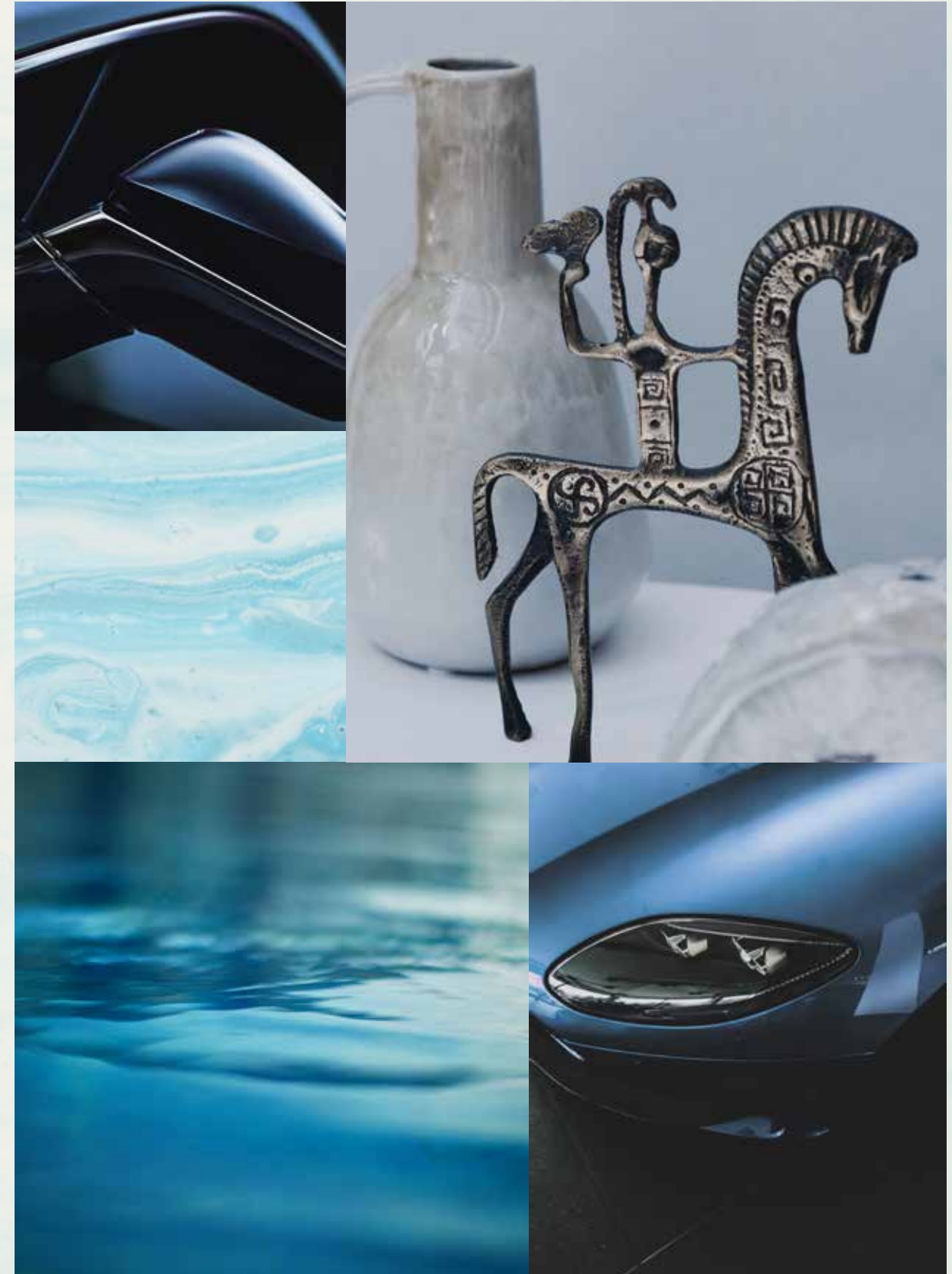
In the Beach Villas, everyday life is a natural expression of harmony and perfection.



Located on the exclusive fronds, each residence enjoys **direct beach connectivity** in this serene, private neighbourhood.

TRUE LUXURY LIVING REFLECTS
YOUR OWN DESIRES.

Choose an elegant home of the highest quality and enjoy an unrivalled lifestyle. Each villa will be unique and bespoke to realise individual needs and personal balance. We build happiness and prosperity for all our residents.





BEACH CONNECTIVITY / SERENE / PRIVATE

VILLA

INDIGO OCEAN

Five-Bedroom Property

“Open plans and open spaces make the villa
more flexible and luxurious.”

WHITESPACE - ARCHITECT

VILLA INDIGO OCEAN

OCEANS OF ELEGANCE

THIS BREATHTAKING WATERFRONT VILLA
HAS A CONTEMPORARY ELEGANT AESTHETIC
WITH GREAT APPEAL.

Tailored lines, extensive glazing and tiered volumes
come together in this resort-inspired residence.
Dream of the openness and the dynamism of the
vast blue ocean with its great depth and its never-
ending possibilities. It is enchanting and ever-
changing, natural and mysterious. It is a source of
constant inspiration.

As we gaze at views of the deep blue, salty
seascape and listen to the graceful ebb and flow of
the waves, we feel a great sensation of relaxation
and peace as we are surrounded by nature.

“The dream living destination, where sun, beach,
sea, and community are all in one.”

WHITESPACE – ARCHITECT





THE ELEGANT, FLOOR-TO-CEILING WINDOWS SEEN ON EACH FLOOR CREATE AN ENHANCED SENSE OF OPEN SPACE. THE WINDOWS INVITE PURE, NATURAL LIGHT INSIDE AND PROVIDE BREATHTAKING VIEWS OF THE CALM, BLUE WATERS.

This is your private tropical oasis on the sparkling golden sands of a paradise island.

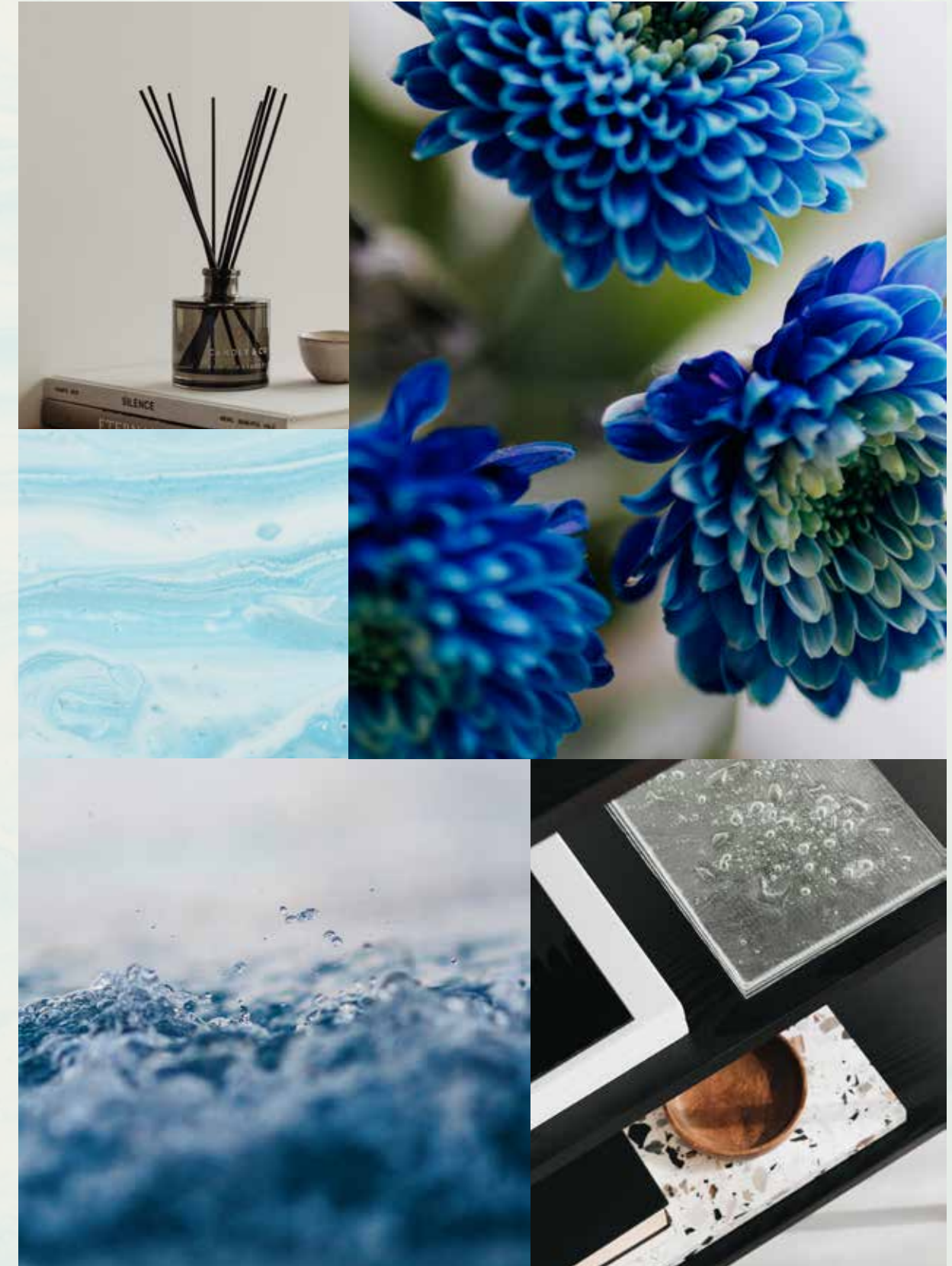


This is a dream home surrounded by the glistening sea, dazzling sunlight and glittering sands.

RECONNECT WITH NATURE.

This exclusive property boasts a number of outdoor living areas, including the spectacular beach garden, the many private balconies, and the spacious roof terrace.

Soak up the peace and serenity of this magnificent waterfront location as you breathe in the salty-sweet sea breeze. This is your blissful beachfront home on the sands of the sparkling shore.



The heart of this home is the beautiful, open-plan living space which faces the dazzling deep blue sea and pristine sands. The opulent colour of the glistening waves will enrich every moment you spend in this space.





BUILD MEMORABLE FAMILY MOMENTS UNITED AROUND THE SHOW KITCHEN'S
MAGNIFICENT FEATURE ISLAND.
ENJOY LIVING SURROUNDED BY AN OCEAN OF ELEGANCE.

On the first floor, the private family room is the ideal space for lounging at any time of day.

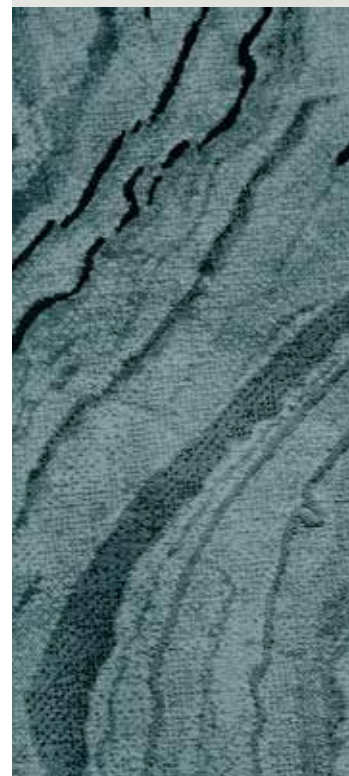
As the water-coloured sky slowly fades to a deep indigo blue, this cosy space becomes even more inviting.



The versatile roof lounge is ideal for several uses - adapt the space to suit your needs. Look out onto the roof terrace with the deep blue sea as your backdrop as you exercise, relax or play.



The majestic master suite, complete with a spacious walk-in wardrobe and beautiful master bathroom, is a peaceful oasis of bliss with prime views overlooking this striking, natural setting.





In this exceptional beachfront property, each final **detail** has been meticulously crafted to offer quality levels of luxury and comfort to its residents.

LUXURIOUS FINISHES THROUGHOUT.

The villa has a glorious water view throughout. Rich natural materials have been selected and integrated into the design to create perfect harmony between the landscape and the water-based setting. You will never tire of the constantly changing display of dazzling waves and dramatic sunshine views.

The spacious master bathroom is lit by both natural light and atmospheric lighting.

Feel uplifted as you practice peaceful moments of self-care in this sumptuous, natural environment.



Each bathroom is finished to perfection with impeccable detail and the finest fixtures and fittings.

Feel surrounded by a sea of calm as you prepare for the day ahead in this elegant space. Blissful beachfront living awaits you here.



INDIGO OCEAN

Beach Villas Collection

G + 2

5 BEDROOMS + FAMILY ROOM
+ ROOF LOUNGE AND TERRACE



GROUND FLOOR

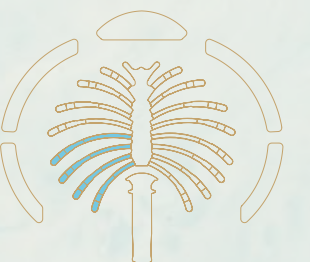


SECOND FLOOR



FIRST FLOOR

FLOOR TYPE	SQ. M.	SQ. FT.
Ground Floor	247.74	2,666.65
Balcony / Terrace / Porch-GF	16.23	174.70
First Floor Area	227.13	2,444.81
Balcony / Terrace - First Floor	43.22	465.22
Second Floor Area	114.85	1,236.24
Balcony / Terrace - Second Floor	37.33	401.82
Garage - Covered	45.82	493.20
TOTAL BUILT-UP AREA	732.32	7,882.63
Garage with Pergola	0.0	0.0
TOTAL AREA	732.32	7,882.63



Numbers, square footage and floor plans are approximate. Final dimensions, square footage and floor plans may vary and are subject to change without notice. The developer reserves the right to make revisions. Built-Up Area is measured in accordance with Dubai Land Department standards. Plans, artistic renderings, landscaping and images are for illustrative purposes only and are subject to change without notice. Landscape shown is indicative and not provided by the developer. Pool layout and configuration shown on floor plans are for general illustrative purposes only and are not provided by the developer. The Bespoke Edition Option offered to the buyer at additional price will include a standard pool offering.

INFO@NAKHEEL.COM
800 NAKHEEL

THE BEACH COLLECTION

**PALM
JEBEL ALI
NAKHEEL**

